

A TINY THERMAL CAMERA. A BIG STEP FORWARD FOR CONTRACTORS.

Compact

THERMAL IMAGING CAMERA DESIGNED FOR YOUR SMARTPHONE

Highly-portable thermal imager, with a wide 36-degree field of view, provides contractors the ability to easily, accurately, and safely inspect indoors.

Available for iPhone® and Android™



206 x 156
Thermal
Sensor



36°
Field of
View



-40° F to 626° F
Detection
Range



1,000 ft
Distance



Works
Day & Night

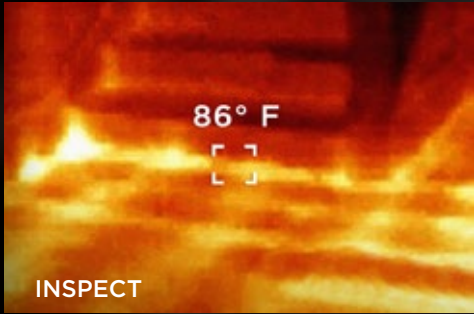


Waterproof
Carrying Case



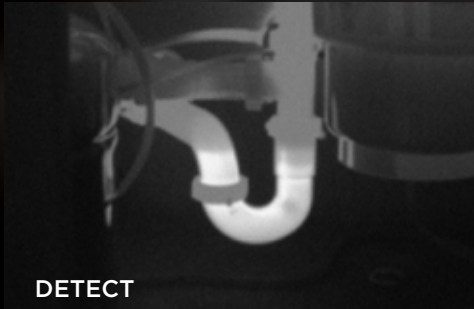
Seek™
thermal

thermal.com



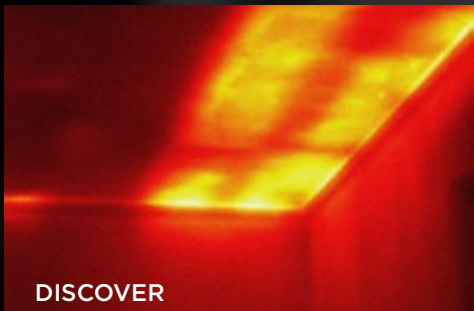
CONNECT AND DETECT

- Wide field-of-view quickly scans the inside of any room for problem areas
- 206 x 156 Thermal Sensor accurately identifies areas of heat loss and gain
- Measures temperature differences from -40 to 626 degrees Fahrenheit
- Portable and lightweight



THERMAL IMAGING TECHNOLOGY THAT'S EASY TO USE

- Intuitive, free app from Google Play and iTunes AppStore
- Library of color palettes to maximize all thermal imagery
- Customizable performance settings to fully personalize the user experience
- Comes with its own waterproof case to withstand the elements



SEEK A NEW ADVANTAGE

- Accurately inspect mechanical, electrical HVAC and building applications
- Safely examine any job site in light or total darkness
- Work faster and be more efficient from the convenience of your smartphone

SPECIFICATIONS

DETECTOR & OPTICS

| | |
|--------------------|------------------------------------|
| Thermal Sensor | 206 x 156 |
| Detection Distance | 1,000 feet (330 yards, 300 meters) |
| Field of View | 36 Degree FOV |
| Temperature Range | -40F to 626F (-40C to 330C) |
| Frame Rate | < 9 Hz |
| Focus | Adjustable Focus |
| Lens Material | Chalcogenide |
| Microbolometer | Vanadium Oxide |
| Pixel Pitch | 12 Microns |
| Spectral Range | 7.5 - 14 Microns |

SYSTEM SPECS

| | |
|---------------------|---|
| User Interface | Connects to a smartphone. Controlled by free Seek mobile app. |
| Temp. Display Scale | Fahrenheit or Celsius |
| Color Palettes | 9 Options |
| Thermal Tools | Spot Thermography, Hi-Low, and Threshold modes |
| Capture Settings | Records photos and video |
| Storage Media | Stores photos and video directly to smartphone |
| Sharing | Share directly from mobile app to email, text, and social media |
| Battery | No batteries required. Powered by smartphone |
| Phone Compatibility | iPhone® and Android™ For compatible phone list, visit thermal.com/supported |

DEVICE & PACKAGE INFO

| | |
|-------------------------------|--|
| Country of Origin | Designed and manufactured in Santa Barbara, California, USA with global components |
| Color | Black |
| Device Dimensions (H x W x D) | 1 x 1.75 x .8 inches |
| Device Weight | .5 ounces |
| Box Dimensions (H x W x D) | 7 x 3.75 x 1.25 inches |
| Package Weight | 8.3 ounces |
| Included in the box | Seek Compact and Waterproof Carrying Case |

For support and user guides visit support.thermal.com



Compact
Available for iPhone® and Android™

Seek
thermal

thermal.com