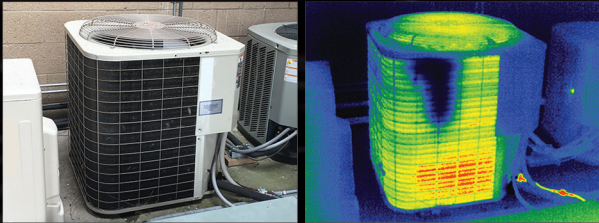
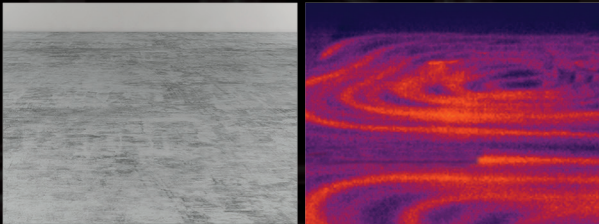


SEE THE UNSEEN™



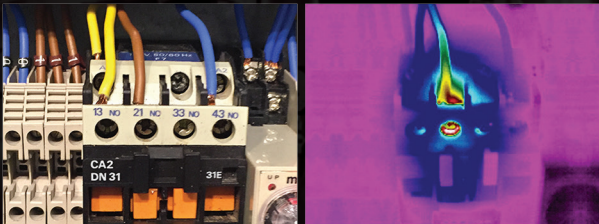
REFRIGERANT LEAKS



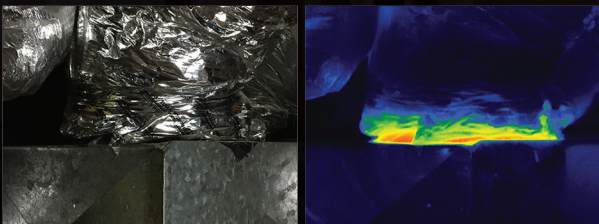
DEFECTIVE FLOOR HEATING



FAILING REVERSING VALVE



LOOSE CONNECTIONS



INSULATION LOSS



seek™
thermal

AFFORDABLE
THERMAL CAMERAS
FOR HVAC/R



DESIGNED AND MANUFACTURED
— IN —
SANTA BARBARA, CALIFORNIA
WITH GLOBAL COMPONENTS

thermal.com



Reveal



CompactPRO



RevealPRO

Handheld Thermal Camera with 32,136 Pixels

Smartphone Thermal Camera with 76,800 Pixels

Handheld Thermal Camera with 76,800 Pixels



300 Lumen LED / Light
Works Day & Night

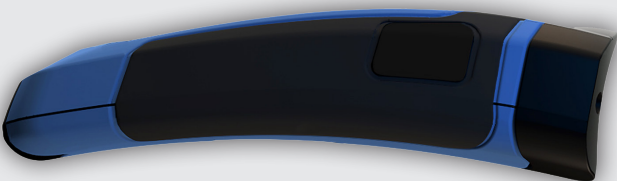
Thermal Sensor	206 x 156
Field of View	36 degrees
Temperature Range	-40F to 626F -40C to 330C
Frame Rate	> 15 Hz

KEY FEATURES

Advanced Thermography Tools | Temperature measurement with automatic detection.

Long-Lasting Rechargeable Battery | Up to 10 hours of continuous thermal imaging.

Removable Storage | Save directly to removable 512MB Micro-SD card.



Waterproof Case
Works Day & Night

Thermal Sensor	320 x 240
Field of View	32 degrees
Temperature Range	-40F to 626F -40C to 330C
Frame Rate	> 15 Hz

KEY FEATURES

Pro Thermography Tools | Temperature measurement with automatic and full manual control.

Focusable Lens for Quick Identification | Aim and focus for the sharpest image.

No Batteries Required | Up to 4 hours of continuous thermal imaging powered by your smartphone.

Capture and Share Photos & Video | Easily document and share from your smartphone or tablet.

Compact

Smartphone Thermal Camera with 32,136 Pixels



Waterproof Case
Works Day & Night

Thermal Sensor	206 x 156
Field of View	36 degrees
Temperature Range	-40F to 626F -40C to 330C
Frame Rate	< 9 Hz

KEY FEATURES

Advanced Thermography Tools | Temperature measurement with automatic detection.

Focusable Lens for Quick Identification | Aim and focus for the sharpest image.

No Batteries Required | Up to 4 hours of continuous thermal imaging powered by your smartphone.

Capture and Share Photos & Video | Easily document and share from your smartphone or tablet.



300 Lumen LED / Light
Works Day & Night

Thermal Sensor	320 x 240
Field of View	32 degrees
Temperature Range	-40F to 626F -40C to 330C
Frame Rate	> 15 Hz

KEY FEATURES

Pro Thermography Tools | Temperature measurement with automatic and full manual control.

Durable & Portable | Rugged, rubberized casing with Corning® Gorilla® Glass.

Long-Lasting Rechargeable Battery | Up to 4 hours of continuous thermal imaging.

Capture Photos for Reports | Save directly to 4GB internal memory.

4X Digital Zoom | Take a closer look from a safe distance.

