

SP Series

Ultra-high performance and maximum flexibility



SP60, SP60H
with viewfinder

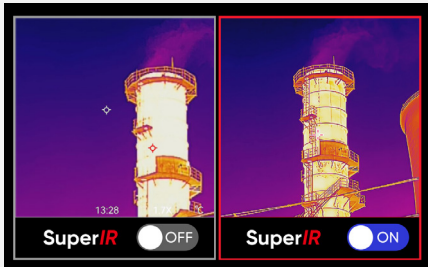


VISIT OUR WEBSITE

SuperIR

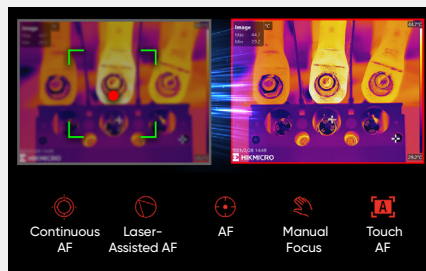
Powered by HIKMICRO SuperIR image enhancement technology, it upscales thermal images from 640 × 480 (307,200 pixels) to **1280 × 960 (1,228,800 pixels)** resolution when viewing live with **25 Hz** fast image frequency and capturing photos.

•SP60: 640 × 480 (307,200 pixels) •Lens: L25 •Distance: 50m



One-second fast focusing

Support for **5 focus modes** (Laser-Assisted AF, Continuous AF, AF, Manual Focus, Touch AF) with a fast focus speed of **1 second** to match your workflow, optimize image clarity, and ensure measurement accuracy.



Flexible Rotating Lens and Screen

The 90° rotating screen and the 180° rotating lens design help to easily view the area around, between, above, or below the target. Keeping a safe distance allows for equally flexible inspections.



1.0x to 12.0x continuous digital zoom



1-Tap Level & Span



Complete Image Annotations



Embedded Laser Distance Meter

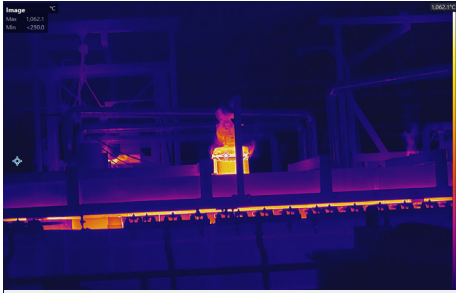


5 Image Mode

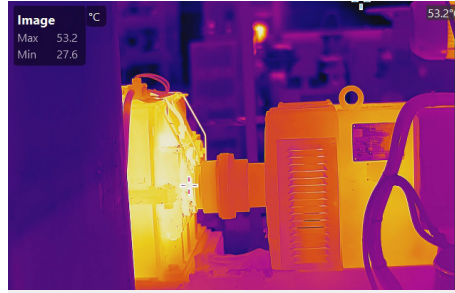


Interchangeable Battery System

APPLICATIONS



High temperature



Industrial



Power Industry

WHAT'S IN THE BOX



- Thermal Imager
- Hand Strap
- Neck Strap
- Rubber Viewfinder Cap (SP60/60H Only)
- Camera Lens Caps
- Dismountable and Rechargeable Li-ion Batteries (x2)
- Power Supply for Battery Charger
- Two-bay Battery Charger
- International Use Plugs (US/EU/UK/AU) for Power Supply
- USB 2.0 A to USB Type-C Cable
- Mini HDMI to HDMI Cable
- USB Type-C Cable to USB Type-C Cable
- Hard Carrying Case
- Calibration Certificate
- Quick Start Guide
- 64GB Micro SD card

OPTIONAL ACCESSORIES



Model No		SP40	SP40H	SP60	SP60H
Infrared Image	IR Resolution	480 x 360	480 x 360	640 x 480	640 x 480
	SuperIR	960 x 720	960 x 720	1280 x 960	1280 x 960
	NETD	< 30 mK (@ 25 °C, F#=1.0)			
	Image Frequency	25 Hz			
	Field of View (FOV)	L6: 6° x 4.5°; L9: 9° x 6.8°; L19: 18.7° x 14°; L37: 37.3° x 27.8°		L8: 8° x 6°; L12: 12° x 9°; L25: 24.8° x 18.7°; L50: 50° x 37.3°	
	Spatial Resolution (IFOV)	L6: 0.22 mrad; L9: 0.33 mrad; L19: 0.68 mrad; L37: 1.35 mrad		L8: 0.22 mrad; L12: 0.33 mrad; L25: 0.68 mrad; L50: 1.35 mrad	
	Focus Speed	Approx. 1 second			
Image Display	Visual Camera	3264 x 2448 (8 MP)			
Measurement and Analysis	Object Temperature Range	-20 °C to 650 °C (-4 °F to 1202 °F)	-40°C to 2200°C (-4°F to 3992°F)	-20 °C to 650 °C (-4 °F to 1202 °F)	-40°C to 2200°C (-4°F to 3992°F)
	Accuracy	±2°C/3.6°F	±1°C /±1.8°F	±2°C/3.6°F	±1°C /±1.8°F
General	Image and Video Formats	JPEG, MP4			
	Wi-Fi	802.11 b/g/n (2.4 GHz and 5 GHz)			
	HDMI Interface	Yes			
	GPS & Compass	Yes			
	Battery Operating Time	Approx. 4 hours			

HIKMICRO Thermography

info@hikmicrotech.com

hikmicro_thermography

support@hikmicrotech.com

HIKMICRO Thermography

HIKMICRO

