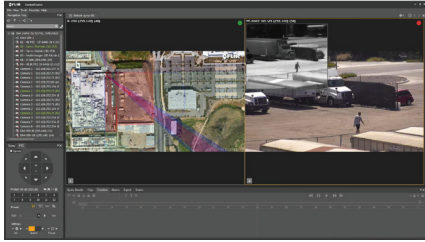


# FLIR ELARA™ R-190

## CE-Compliant Commercial Ground Security Radar

The FLIR Elara R-190 is a compact ground radar used to detect and provide early warning of intruders as part of a larger video surveillance system. Radars can track targets in all weather and lighting conditions and dynamically map them in real time for position intelligence. The Elara R-190 features a 90-degree field of view and up to 300-meter range for vehicle tracking and 125-meter range for human tracking, providing wide-area protection and situational awareness beyond the fence line. With simultaneous tracking of up to 32 targets and geolocation capability, the Elara R-190 can activate alarms and guide PTZ cameras for visual verification to maximize security coverage and increase the amount of time available to react to a threat.

**PHYSICAL SECURITY**  
**PERIMETER PROTECTION**  
**OUTDOOR INTRUSION DETECTION**  
**GEOLOCATION CAPABILITY**  
**VMS COMPATIBILITY**  
**CYBERSECURITY HARDENED**



### DETECT AND RESPOND TO INTRUSIONS FASTER

Receive advanced warning of human and vehicle intrusions beyond the fence line

- Scan field of view up to 10 times per second for fast target detection and smooth target tracking
- Detect humans at distances up to 125 m (410 ft) and vehicles up to 300 m (984 ft)
- Long range and wide field of view enable a faster intrusion response than stand-alone camera systems

### EXPAND SITUATIONAL AWARENESS

Continuously track and precisely locate up to 32 targets simultaneously, and quickly intercept threats in any environmental or weather condition

- Track targets in rain, snow, fog, light, and dark, while ignoring shadows and light reflections that trigger false alerts on visual-only systems
- Interact with radar tracks on the map to override automatic PTZ prioritizations and focus on certain high-interest targets\*
- Video stream birds-eye map with overlaid masking zones, alarm areas, targets, and associated target range

### INTEGRATE QUICKLY AND AFFORDABLY

Radar target tracking information is integrated with video management systems (VMS) for precise accuracy and full control

- Link multiple radars for large field-of-view requirements, and connect to a PTZ camera for seamless target tracking
- Combine multiple radars with overlapping coverage and no interference between units
- Compatible with FLIR Triton PT-Series HD, FLIR Elara DX Series, and FLIR Saros DM Series Thermal Security Cameras; and Quasar 4K IR PTZ Visible Security Cameras
- Compatible with FLIR United VMS and other third-party VMS using standard ONVIF S Conformant protocols

\*Requires UVMS and the FLIR Detections System Module

For more information visit:  
[www.flir.com/R-190](http://www.flir.com/R-190)

[www.teledyneflir.com](http://www.teledyneflir.com)

Imagery for illustration purposes only. Specifications are subject to change without notice. ©2021 Teledyne FLIR LLC, Inc. All rights reserved.  
07/23/2021 REV1



## ELARA R-190 RADAR (CE VERSION)

Performance	
Field of View [H x V]	90° x 20°
Frequency Range	24.000-24.250 GHz ISM Band
RF Transmit Power	6 dBm (0.005 W)
Human Detection Range	125 m (410 ft)
Vehicle Detection Range	300 m (984 ft)
Target Detection Speed	0.2 m/sec
Radar Targets	32
Range Resolution	0.6 m
Range Accuracy	<1 m
Angular Accuracy	0.6°
Refresh Rate	10 Hz
Coverage Area	Human Detection: 3 acres (12,000 m <sup>2</sup> )
Target Information	GPS coordinates, velocity, RCS, range, azimuth angle/direction, heading, course/track, target ID
Supported Protocols	AXML, ONVIF, FLIR Nexus SDK, FLIR Nexus CGI
Pan Range	±43°
Tilt Range	30° / -60°
Interface	
Connector Types	RJ45 Ethernet, Power Terminal Block
Connectivity	10/100 Ethernet
Mechanical	
Weight	2.4 kg / 5.3 lb
Height	161 mm / 6.34 in
Width	161 mm / 6.34 in
Depth	195 mm / 7.68 in
Box Contents	Radar, back box, back box cover, back box side cover, wall mount plate, RJ45 cover, screwdriver, hex wrench, 10-pin I/O connector
Optional Accessories	421-0067-00: Pole Mount Kit 421-0066-00: Corner Mount Kit 421-0083-00: 180° Dual Radar Wall Mount Kit 4210755: PoE+ Power Supply
Environmental	
Operating Temperature	-40°C to 70°C (-40°F to 158°F)
Non-operating Temp	-50°C to 85°C (-58°F to 185°F)
IP Rating	IP66
Power	
Input Voltage	12V DC, 24V AC, and POE+
Power Consumption	7.5 W

## AMERICAS

27700 SW Parkway Ave.  
Wilsonville, OR 97070  
Office: +1 877.773.3547

6769 Hollister Ave.  
Goleta, CA 93117  
Office: +1 805.690.6600

For more information visit:  
[www.flir.com/R-190](http://www.flir.com/R-190)

[www.teledyneflir.com](http://www.teledyneflir.com)

Imagery for illustration purposes only. Specifications are subject to change without notice. ©2021 Teledyne FLIR LLC, Inc. All rights reserved.  
07/23/2021 REV1