

# TU Gen2 LRF

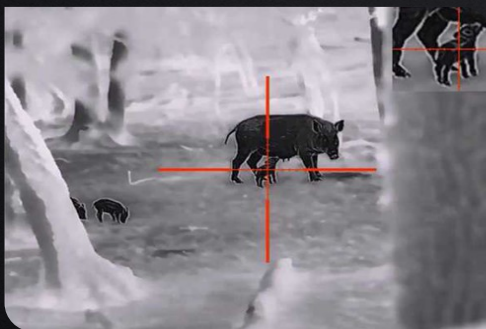
Thermal Imaging Scope

Redefine Hunting by Laser Ranging



## Introduction

With the laser rangefinder seamlessly integrated into a slim-design scope, the TU Gen2 LRF Series enables precise detection of targets at distances of up to 1500 meters, empowering hunters with a reliable perception of distance at the hunting site to make accurate shots. The product has undergone meticulous optimization in its detailed design, elevating user-friendly operation. Furthermore, the battery life has seen a substantial extension, resulting in a 20% increase in duration.



## Features and Benefits

- o HD AMOLED display for higher image quality and reduced visual fatigue
- o The PureIR algorithm for high-sensitivity thermal images
- o Built-in laser rangefinder for 1500m accurate target detection
- o Super long battery life of up to 12 hours
- o OTA firmware upgrade by connecting to the APP
- o Photo and video recording to keep the best moments
- o IP67 encapsulation, resistant to 800G shock
- o User-friendly improved left-hand operation experience and optimized opening direction of USB cover

## Applications

- o Night hunting
- o Law enforcement
- o Search & Rescue
- o Personal security

## Specifications

Product model	TU431 LRF	TU451 LRF	TU631 LRF	TU651 LRF
<b>Sensor</b>				
Type	Uncooled VOx Infrared Detector, 8 to 14 $\mu$ m			
Resolution	400×300, 12 $\mu$ m		640×480, 12 $\mu$ m	
NETD	≤30mK			
Frame rate	50 Hz			
<b>Lens</b>				
Focal length	35 mm, F1.0	50 mm, F1.0	35 mm, F1.0	50 mm, F1.0
Field of angle	7.8°×5.9°	5.5°×4.1°	12.5°×9.4°	8.8°×6.6°
Optical zoom	2.65x	3.78x	1.65x	2.36x
Digital zoom	1x ~ 4x		1x ~ 8x	
Focus	Manual			
<b>Display</b>				
Display type	0.39" AMOLED			
Resolution	1440×1080			
Eyepiece	Exit pupil distance ≥ 48 mm; Diopter ± 4; Zoom: 14x			
Video output	Digital video			
<b>Range Performance</b>				
Detection range	1000 m	1400 m		2000 m
<b>Hardware</b>				
Laser rangefinder	Max. measuring range: 1000m		Max. measuring range: 1500m	
<b>Functions</b>				
Scene modes	Enhanced, Highlight and Natural			
Color palettes	White Hot, Black Hot, adjustable Red Hot , Green Hot, Iron Red, Blue Hot			
Recording function	Photo/Video			
WIFI	2.4G			
Supported Application	TargetIR			
Firmware OTA	Upgrade device firmware via app connection			
Others	PIP, Hot spot tracking			
<b>Power</b>				
Battery type	Single 18650 battery (built-in) and customized battery (external)			
Operating time	≥ 12 hours			
<b>Interface</b>				
USB	USB Type-C			
Video interface	micro HDMI			
Mechanical interface	Picatinny			
Tube diameter	Standard 30 mm			
<b>System</b>				
Language settings	English / Russian / German / French / Italian / Spanish / Japanese / Korean / Polish			
Memory capacity	128GB			
<b>Environmental</b>				
Operating temperature	-30°C to 50°C			
Storage temperature	-40°C to 70°C			
Humidity	10 % to 95 % non-condensing			
Shock	800 G at 1 ms half sine pulse (as per IEC60068-2-27)			
Encapsulation	IP67			
Certification	FCC, CE, RoHS, EAC, un38.3			
<b>Physical</b>				
Weight	≤1250 g (without eye mask and battery)			
Size	≤377×107×99 mm (without eye mask)			
Standard	Device, lens cap, eye mask, 5V2A adapter (US, Britain, Australia and Europe), Desktop charger, customized battery×2, Extended clip×2. USB Type-C cable, micro HDMI cable, Quick start guide			
Optional	Bluetooth remote control, Customized battery, Extended bracket			