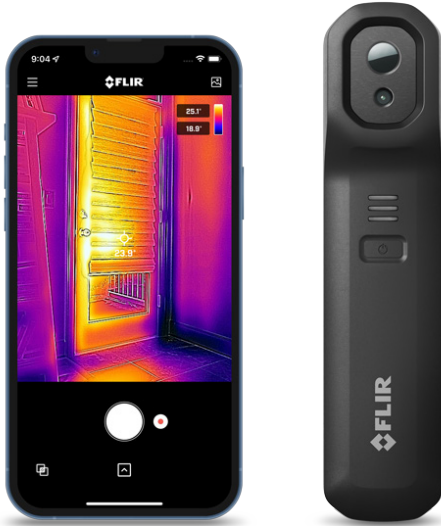




FLIR ONE® EDGE SERIES

Thermal cameras with wireless connectivity for iOS® and Android™ smart devices



Key Features:

- Wirelessly connects to your smart device for convenient inspections
- Unrivaled thermal image clarity with MSX® (Multi-Spectral Dynamic Imaging)
- Use the FLIR ONE app for efficient thermal analysis, and seamlessly connect to the FLIR Ignite™ cloud solution

Main Applications:

- Identifying and locating moisture intrusion and insulation deficiencies
- Diagnosing issues in HVAC/R inspections
- Identifying abnormalities in electrical and mechanical components

www.flir.com/flir-one

SPECIFICATIONS

	FLIR ONE Edge	FLIR ONE Edge Pro
Thermal resolution	80 × 60 (4,800 pixels)	160 × 120 (19,200 pixels)
Object temperature range(s)	-20°C to 120°C (-4°F to 248°F)	-20°C to 120°C (-4°F to 248°F) 0°C to 400°C (32°F to 752°F)
VividIR image enhancement	No	Yes
Image presentation modes	MSX, infrared image, visual image	
Live measurement analysis	Hottest, coldest, and 3 adjustable spots	
Android & iOS compatibility	Yes, compatible with both iOS and Android devices	
Wireless remote operation	Yes (up to 5 m from smart device)	
General Features		
Device compatibility	iOS (version 15 and later) or Android (version 11 and later) smartphones and tablets	
IP rating	IP54	
Drop tested	Drop from 2 m (6.56 ft)	
FLIR software compatibility	FLIR ONE app, FLIR Ignite, FLIR Thermal Studio	
SDK available for app development	Yes	
Thermal sensitivity	70 mK	
Certifications	RoHS, CE/FCC, CEC-BC, EN62133, UL1642, WEEE 2012/19/EU	
Operating temperature	-10°C to 50°C (14°F to 122°F), battery charging 0°C to 45°C (32°F to 113°F)	
Storage temperature	-40°C to 70°C (-40°F to 158°F)	
Size (w × h × d)	35 mm × 37.5 mm × 149 mm (1.4 in × 1.5 in × 5.9 in)	
Weight (incl. battery)	153 g (5.4 oz)	
Clip span	130 mm (min) / 195 mm (max)	

	FLIR ONE Edge	FLIR ONE Edge Pro
Optical Data		
Spectral range	8 μm to 14 μm	
Visual resolution	640 × 480	
HFOV / VFOV	54° ±1° / 42° ±1°	
Frame rate	8.7 Hz	
Focus	Fixed 30 cm – infinity	
Measurement		
Accuracy	±3°C (5.4°F) or ±5%. Applicable 60 sec after start-up when the unit is within 15°C to 35°C (59°F to 95°F) and the scene is within 5°C to 120°C (41°F to 248°F)	
Emissivity correction	Matte, Semi-Matte, Semi-Glossy, Glossy	
Measurement correction	Emissivity; Reflected apparent temperature (22°C / 72°F)	
Shutter	Automatic/Manual	
Power		
Battery life	2 h 30 min	
Battery charge time	60–90 min for fully charged. 15 min charging, from empty battery, gives 40 min operating time	
Interfaces		
Wi-Fi	802.11 a/b/g/n	
Bluetooth	Uses Bluetooth to set up the peer-to-peer Wi-Fi network that the camera creates to connect to the mobile device	
Charging	Female USB-C (5V/1A)	
Remote connection	Via Wi-Fi	

Specifications subject to change. For the most up-to-date specifications, please visit flir.com.

For more information contact: Sales@TeledyneFLIR.com
or to find your local support number, visit: flir.com/contactsupport
www.teledyneflir.com

This product is subject to United States export regulations and may require US authorization prior to export, reexport, or transfer to non-US persons or parties. Diversion contrary to US law is prohibited.
For assistance with confirming the Jurisdiction & Classification of Teledyne FLIR, LLC products, please contact exportquestions@flir.com. ©2023 Teledyne FLIR, LLC. All rights reserved.

Revised 06/27/23
FLIR ONE Edge Series_Datasheet-LTR 23-0403-INS



FLIR ONE® EDGE SERIES

Thermal Cameras with wireless connectivity for iOS® and Android™ smart devices

SPECIFICATIONS, CONT.

	FLIR ONE Edge	FLIR ONE Edge Pro
App		
Video and image capture	Yes	
File formats	Radiometric JPG, MPEG-4 (file format MOV (iOS), MP4 (Android))	
Spot measurements	Hottest, Coldest, and 3 spot measurement	
Adjustable MSX distance	0.3 m – infinity	
Visual battery indicator	0% to 100%	
Radio		
Wi-Fi	<ul style="list-style-type: none">• Standard: 802.11 a/ac/b/g/n• Frequency range:<ul style="list-style-type: none">- 2401–2473 MHz- 5150–5250 MHz• Max. output power: 15 dBm	
Bluetooth	<ul style="list-style-type: none">• Frequency range:<ul style="list-style-type: none">- 2400–2484 MHz• Max. output power: 10 dBm	

Apple Store FLIR Apps



Google Play Store FLIR Apps



Specifications subject to change. For the most up-to-date specifications, please visit flir.com.

Specifications subject to change. For the most up-to-date specifications, please visit flir.com.

For more information contact: Sales@TeledyneFLIR.com
or to find your local support number, visit: flir.com/contactsupport
www.teledyneflir.com

This product is subject to United States export regulations and may require US authorization prior to export, reexport, or transfer to non-US persons or parties. Diversion contrary to US law is prohibited.
For assistance with confirming the Jurisdiction & Classification of Teledyne FLIR, LLC products, please contact exportquestions@flir.com. ©2023 Teledyne FLIR, LLC. All rights reserved.

Revised 06/27/23
FLIR ONE Edge Series_Datasheet-LTR 23-0403-INS